



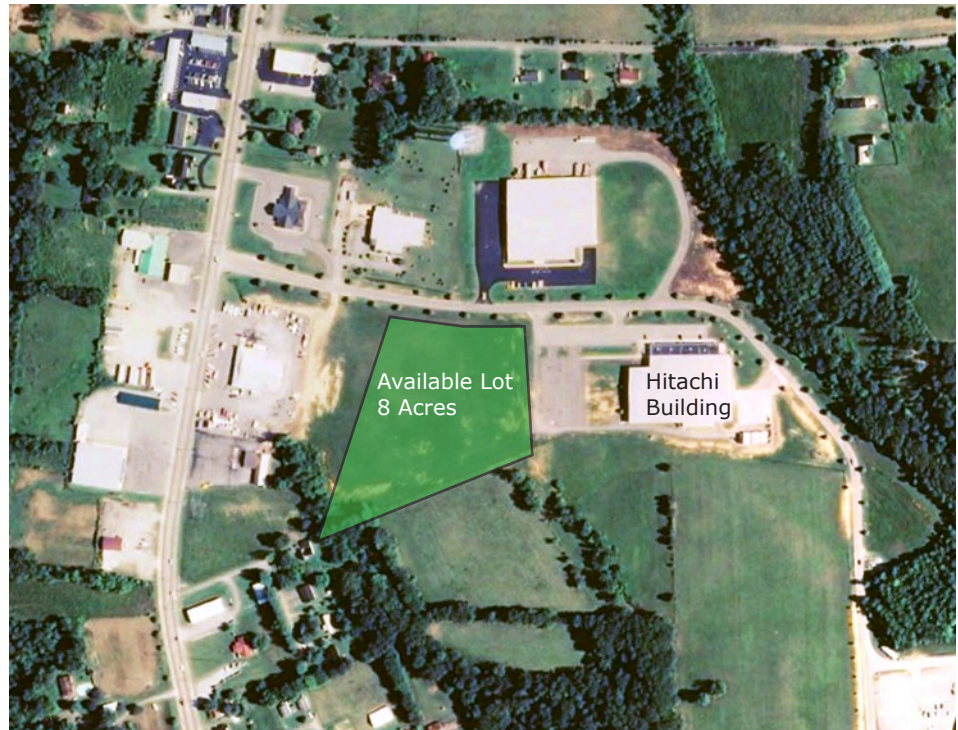
Russell County Industrial
Development Authority

2150 N. Main Street,
Jamestown, Kentucky 42629
(270) 866-7070
www.rcidaky.com

HITACHI CABLE BUILDING

Russell Springs, Kentucky

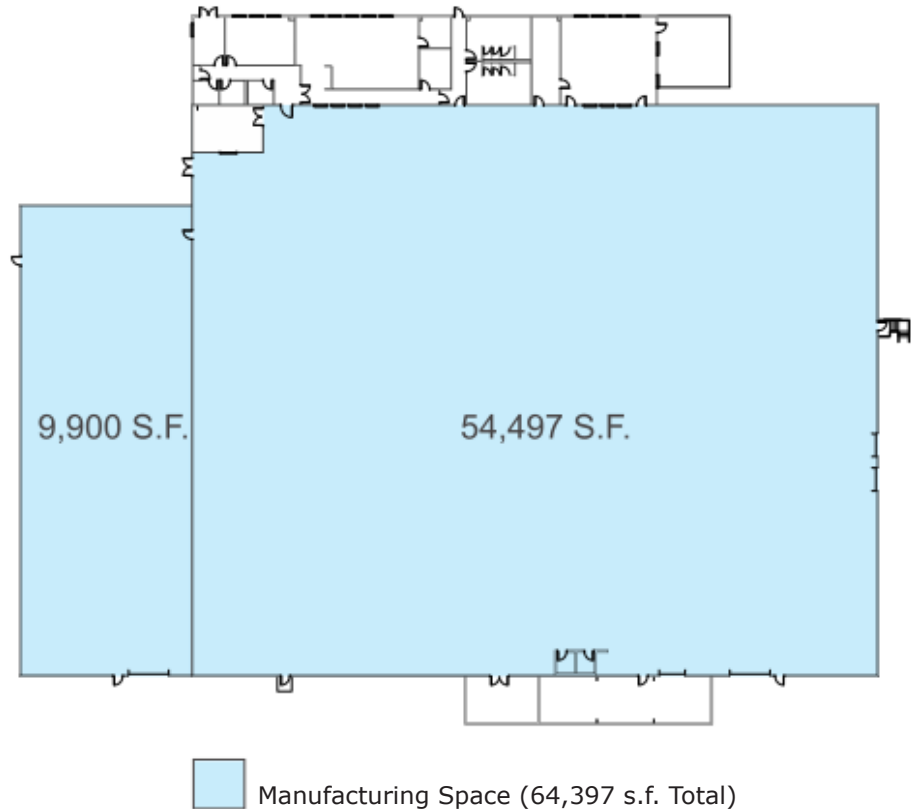
Available for immediate occupancy, the Hitachi Building is located in the Russell County Business Park along with Bruss North America, Tantus Tobacco and Lily Creek Industries. An additional eight-acre lot that borders the property is also available.





Russell County Industrial
Development Authority

2150 N. Main Street,
Jamestown, Kentucky 42629
(270) 866-7070
www.rcidaky.com



HITACHI CABLE BUILDING

223 Progress Drive, Russell Springs, KY 42642

Location: Within western city limits of Russell Springs

Zoning: Light Industrial

Ceiling height (ft)

Minimum: 24, Maximum: 32.4

Floor type: Reinforced concrete, 6 inches, 200x240 feet

Truck docks: 2

Construction: Pre-engineered metal and Masonry

Sections:

Manufacturing: 57,900 sq. ft.

Office: 4,743 sq. ft.

Mechanical 1,445 sq. ft.

Air Conditioning: All

Highway Access: Louie B. Nunn Parkway interchange approximately 1.0 miles north via U.S. 127

Commercial Air Access: Blue Grass Airport (Lexington, Ky.) Distance: 86 miles northeast of site



Russell County Industrial
Development Authority

2150 N. Main Street,
Jamestown, Kentucky 42629
(270) 866-7070
www.rcidaky.com

Railroad: Not rail served

Water: Russell Springs Water & Sewer
8" line at building

Sewer: City of Russell Springs
8" gravity line serves the building

Natural Gas: Lake Cumberland Gas Authority
2" line at building

Electricity: Kentucky Utilities (a PPL company)
3-Phase Available

Broadband (type/service): ILEC— Duo County Telephone Cooperative
Corporation Inc.

Ownership: Russell County Industrial Development Authority

Price: \$3,700,000

For further information contact:
Gene Royalty, Executive Director
Russell County Industrial Development Authority
2150 N. Main Street, Jamestown, KY 42629
(270) 866-7070

